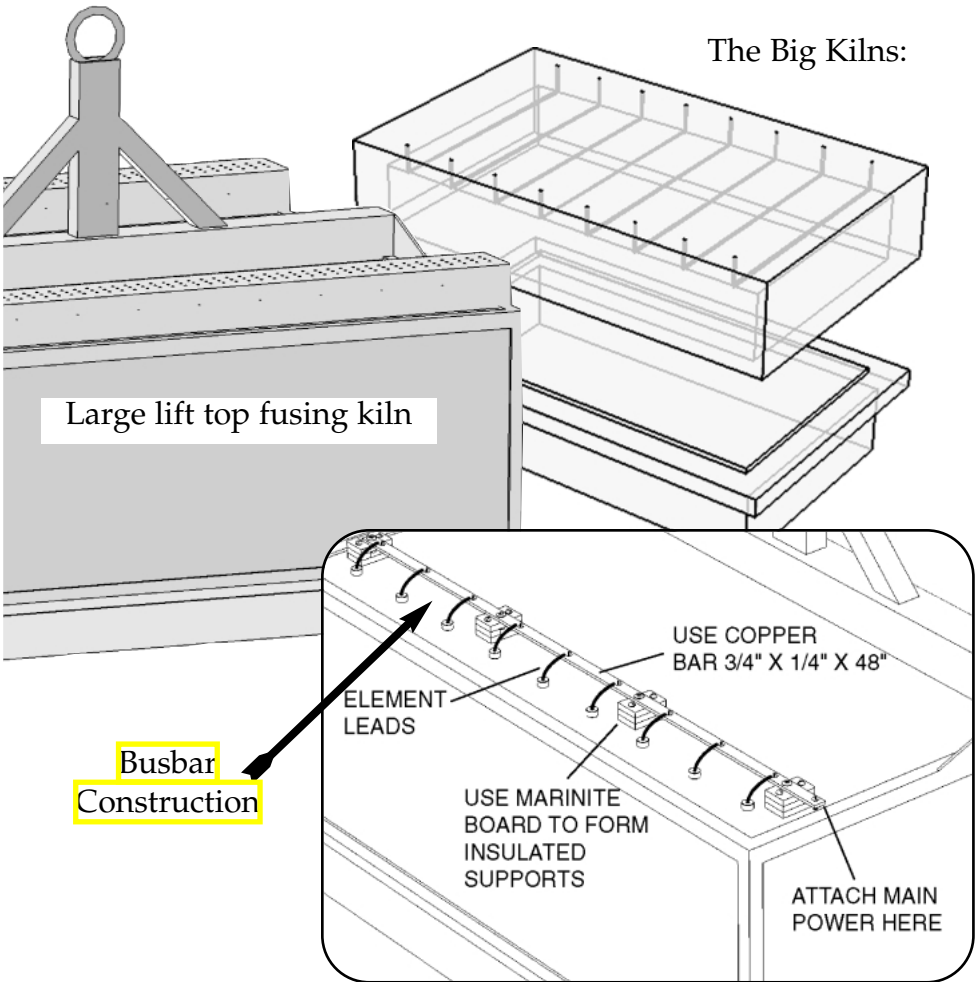


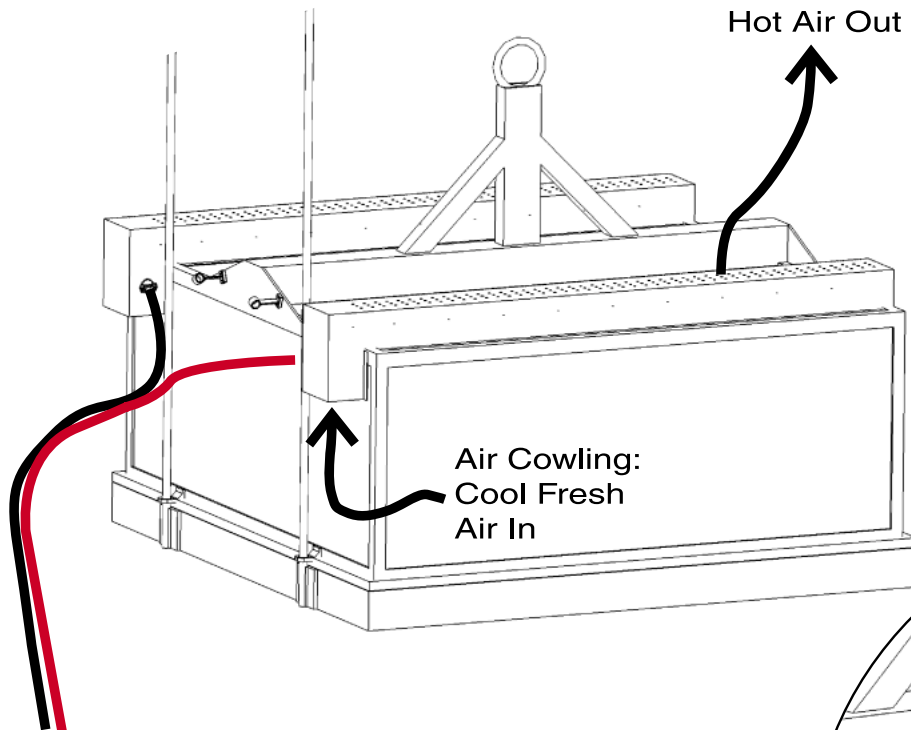
# The Large Fusing and/or Slumping Kiln:

In recent years there has been a great interest in **large fusing and slumping kilns**. We have our components in perhaps 75 of these kilns, some as large as 120 cubic feet. So we have a good deal of experience and can help guide you with our expertise. The large rods and donuts combined with expertly wound elements provide the successful combination to make your project a reality at a fraction of the cost of a store bought model.

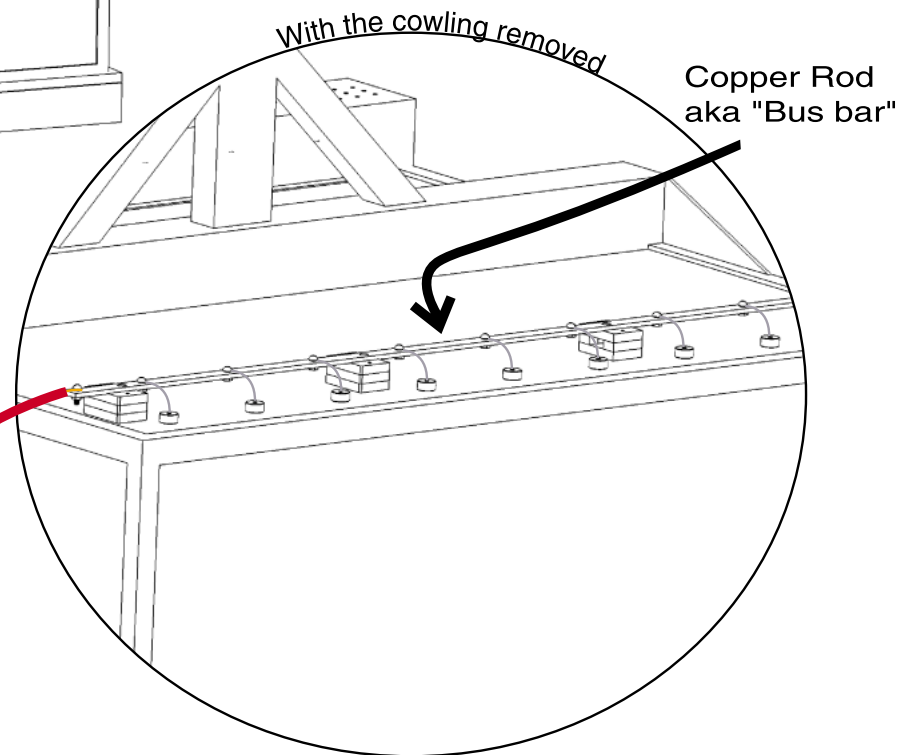
We can help with all facets of design from 3-D CAD drawings to design critique, electrical schematics to controllers. But typically our customers already know what they want. And they come to us for elements and element components.



This is a typical single phase installation. Here you just deal with two power input lines that run down a pair of parallel bus bars.



Power In —  
Use Heavy gauge wire  
specifically rated to your  
ampere usage.



Power In

