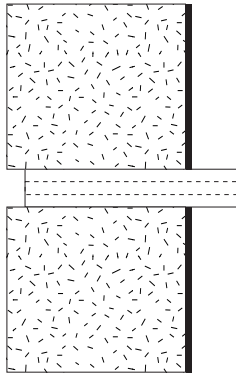


Joppa Glassworks, Inc.
P. O. Box 202
Warner, NH 03278
e-mail: joppaglass@conknet.com
603-456-3569

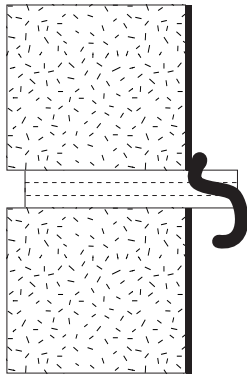


1. Drill hole through the metal wall and insulation

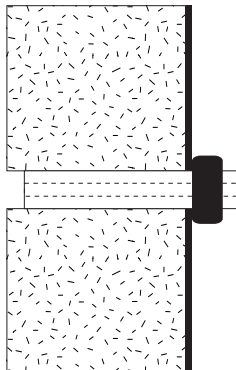
2. Place section of tubing in hole



3. Make a hand rolled "Squiggle" of the mortar & add crushed IFB to make it more pliable.



4. Wrap "squiggle" around ceramic cordierite tubing



5. Give mortar a proper shape.

You just want it wet enough for the mortar to stick to the ceramic tube

6. Let mortar dry completely

We sell small baggies of mortar (\$5.00) enough for making 5 or 6 "thru-tubes" and we also sell sections of 1/2" cordierite tubing— 5" for \$4.00